

COLDWATER

 COLDWATER

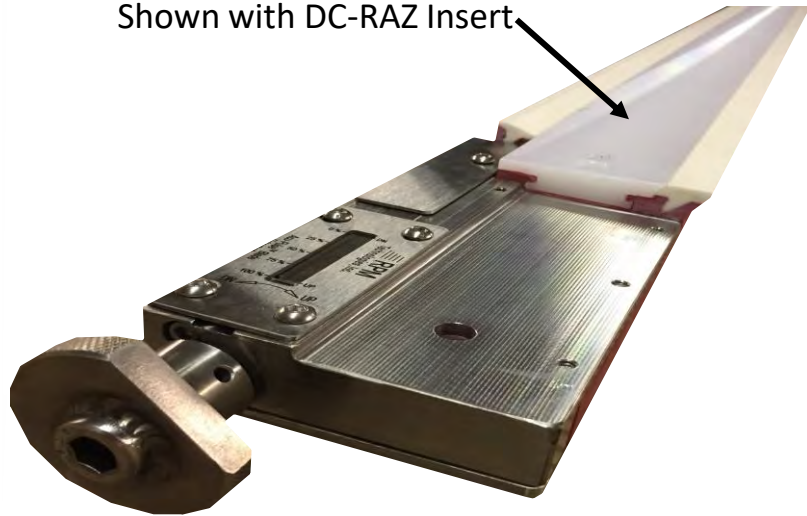
*Reliable Innovation for
Consumables & Optimization*

Acu-Tech Forming Products

Acu-Pulse

The Acu-Pulse™ Blade is the **ONLY** adjustable pulse generating forming element of its kind offered to the paper industry. This uniquely designed blade allows for on the run adjustment which enables the paper maker to optimize from grade to grade without having to change blades.

Shown with DC-RAZ Insert



- **Improve Sheet Formation**
- **Improve Sheet Physical Properties**
- **Increase Production (Speed)**
- **Reduce Machine Load (energy savings)**
- **Improve Drainage**
- **Reduce Basis Weight (Cost Savings)**
- **Improve Retention**
- **Reduce Chemical Usage**

Available as full ceramic or with DC-RAZ insert option as shown
Automation Package and/or electronic indication available

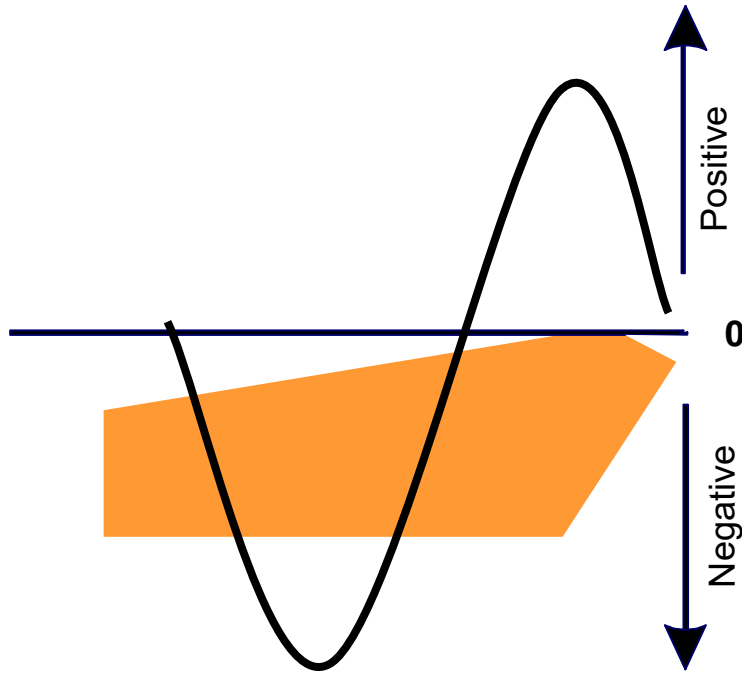


*Reliable Innovation for
Consumables & Optimization*

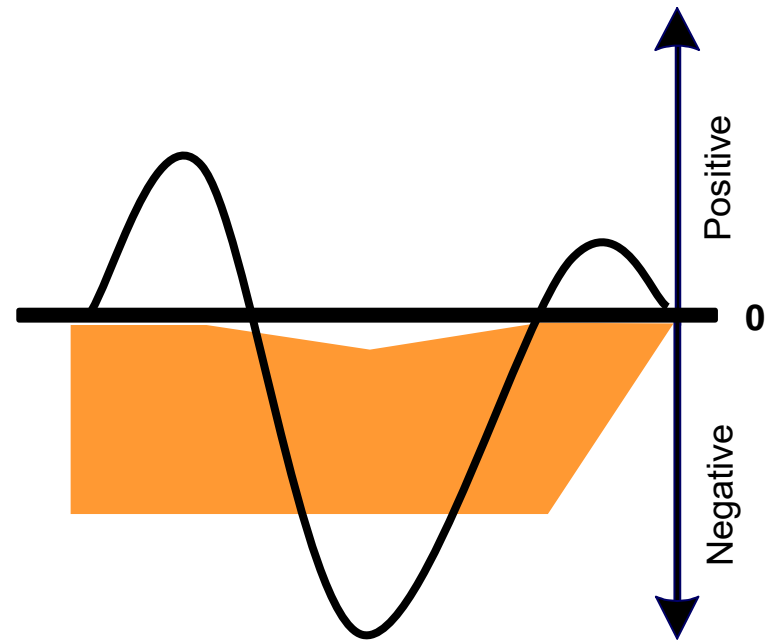
Pulse Blade Current Technology

Only Good for 1 basis weight and Speed

Pressure Profile



Turbo Blade

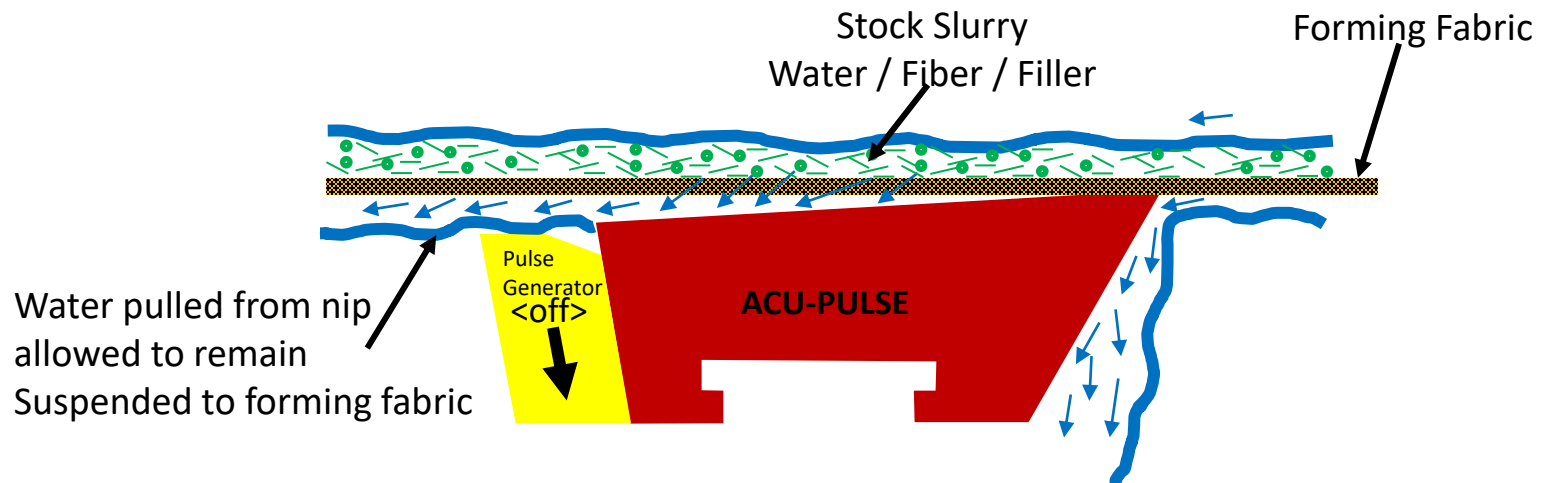


Agitator "V" Blade

Acu-Pulse™ Blade

Patented

Blade Disengaged <off>
Operates similar to standard foil blade

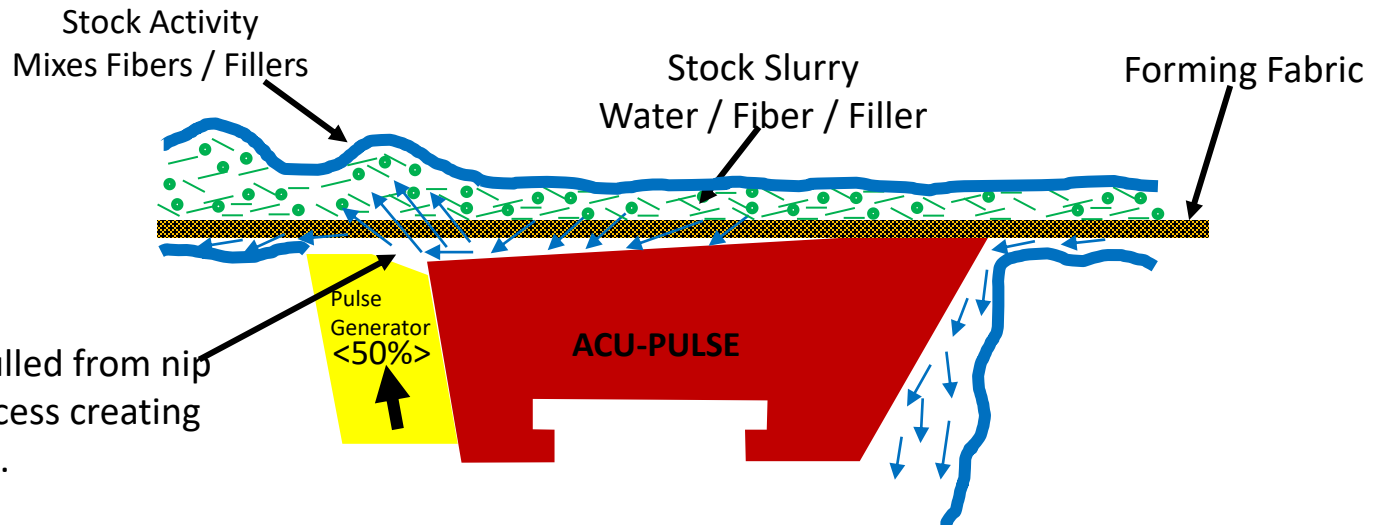


Acu-Pulse™ Blade

Patented

Blade Partially Engaged <50%>

Operates as Partially Engaged Activity Blade (Low Pulse Intensity)

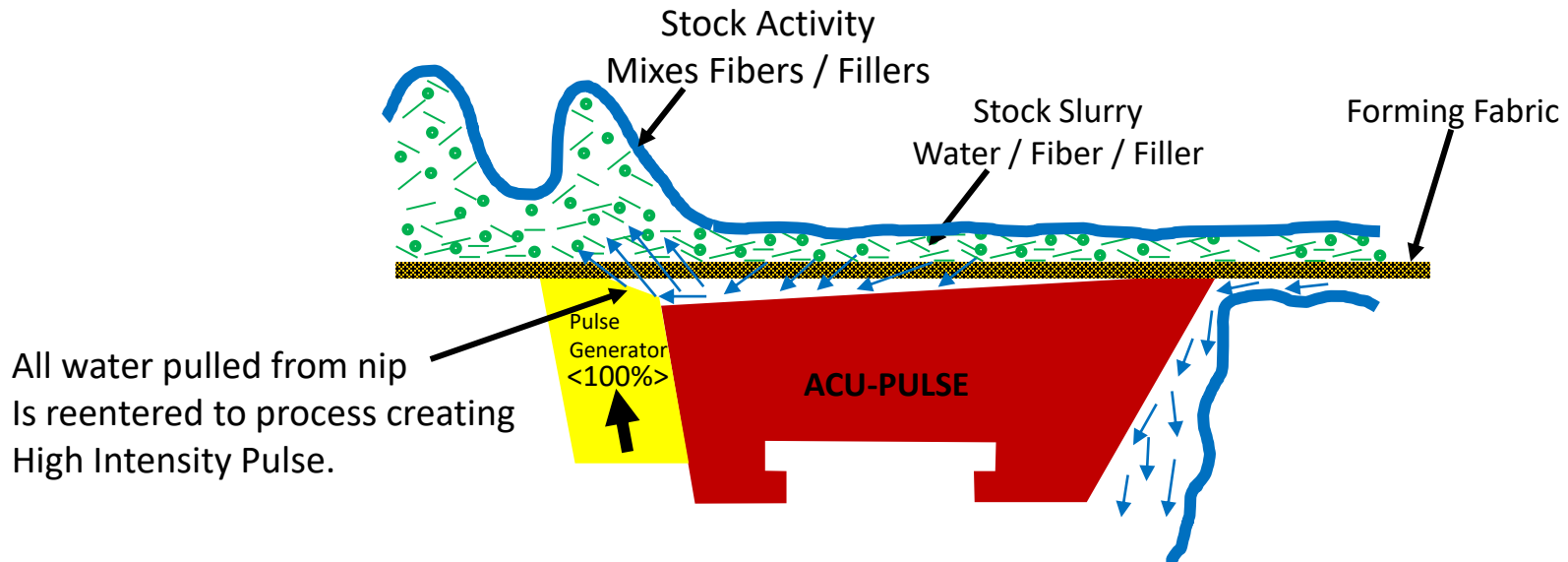


Acu-Pulse™ Blade

Patented

Blade Fully Engaged <100%>

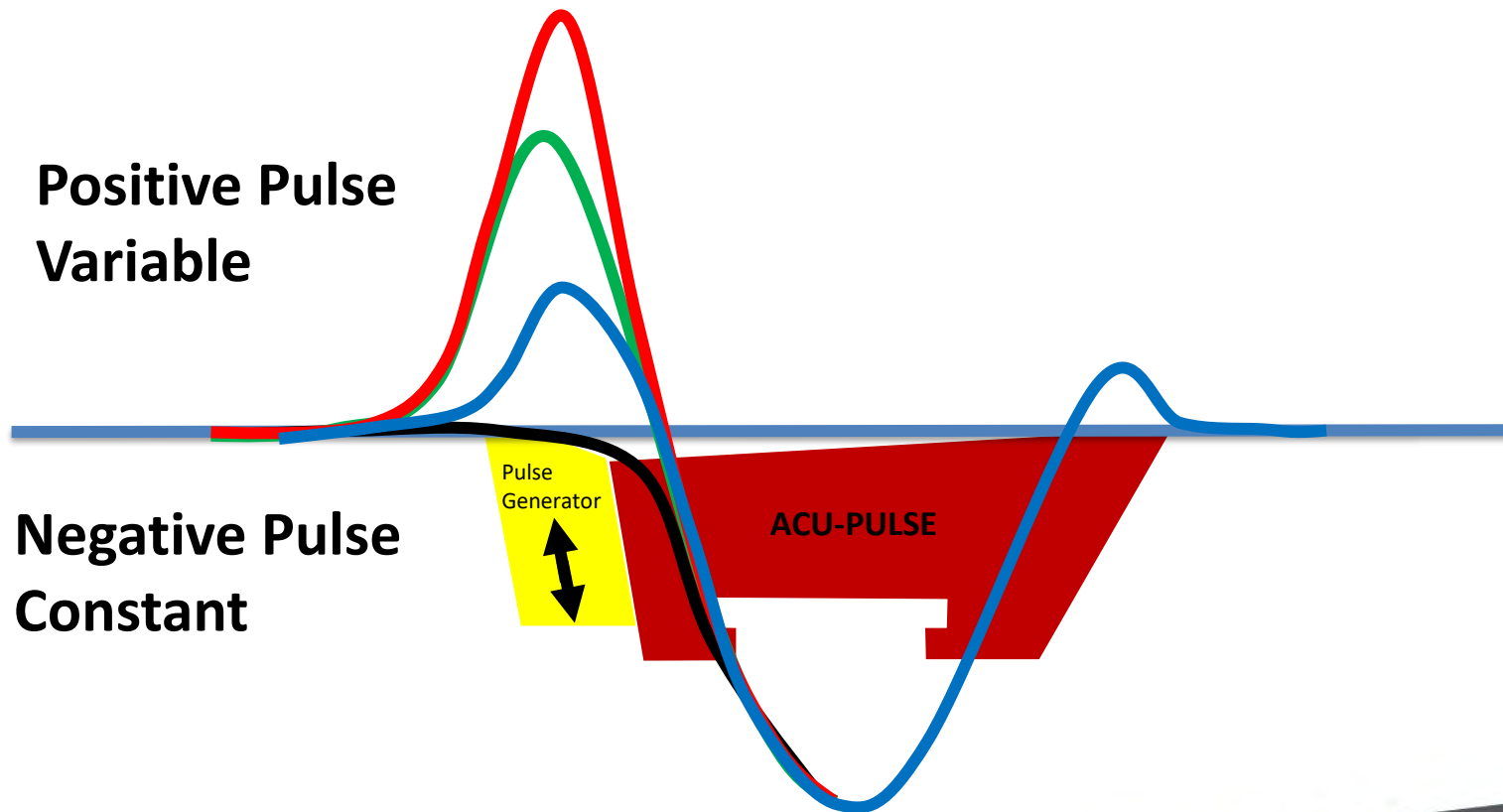
Operates as Fully Engaged Activity Blade (High Pulse Intensity)



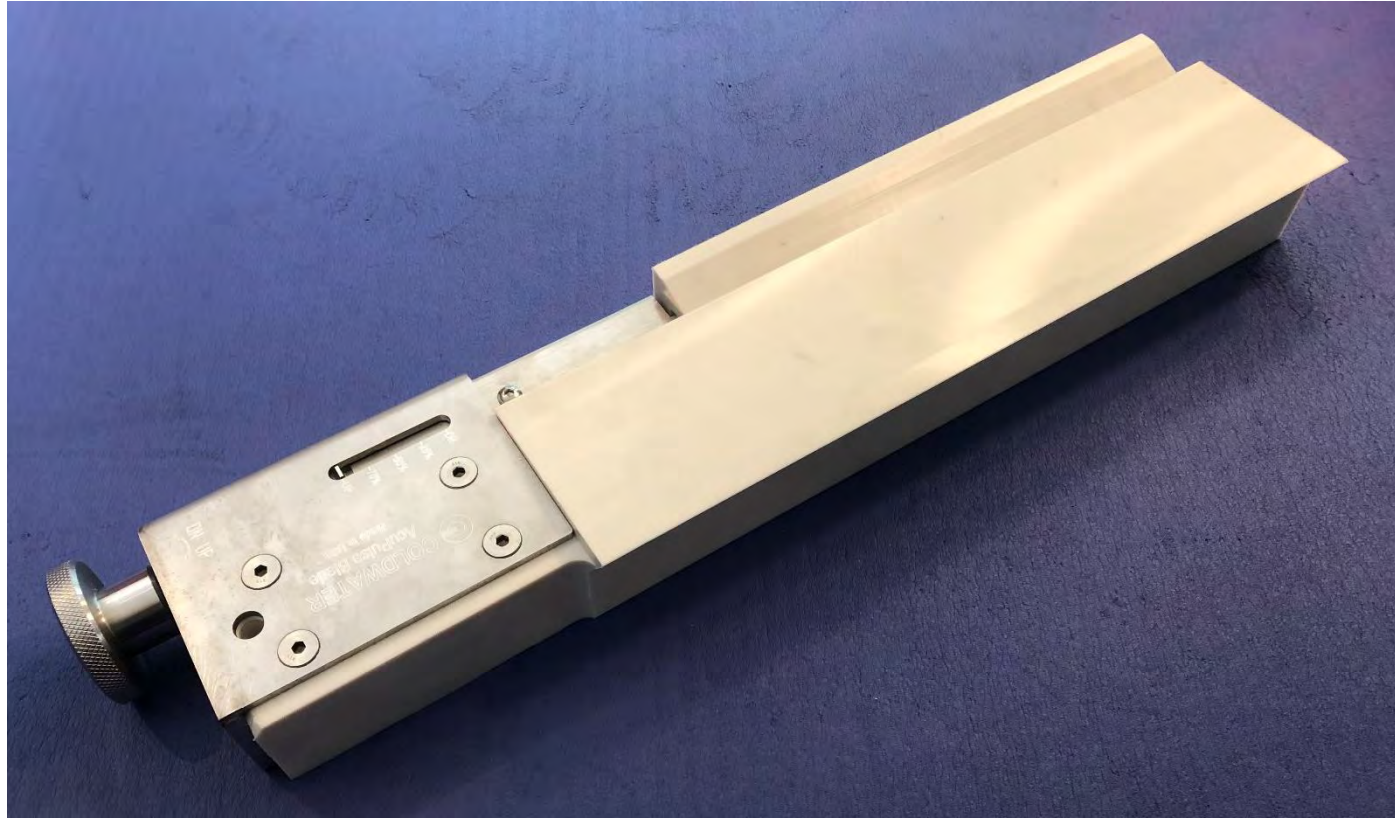
Acu-Pulse™ Blade

Patented

Pressure Profile



INTRODUCING the NEW
Acu-Pulse CW6500 UHMWPE



 **COLDWATER**

*Reliable Innovation for
Consumables & Optimization*

Acu-Tech Forming Products

Acu-Pulse CW6500 UHMWPE



**FRP used in CD of
Pulse Generator to
provide stability
over long lengths**

Acu-Tech Forming Products

Acu-Pulse CW6500 UHMWPE

Robust Mechanism with Scale



 **COLDWATER**

Reliable Innovation for
Consumables & Optimization